

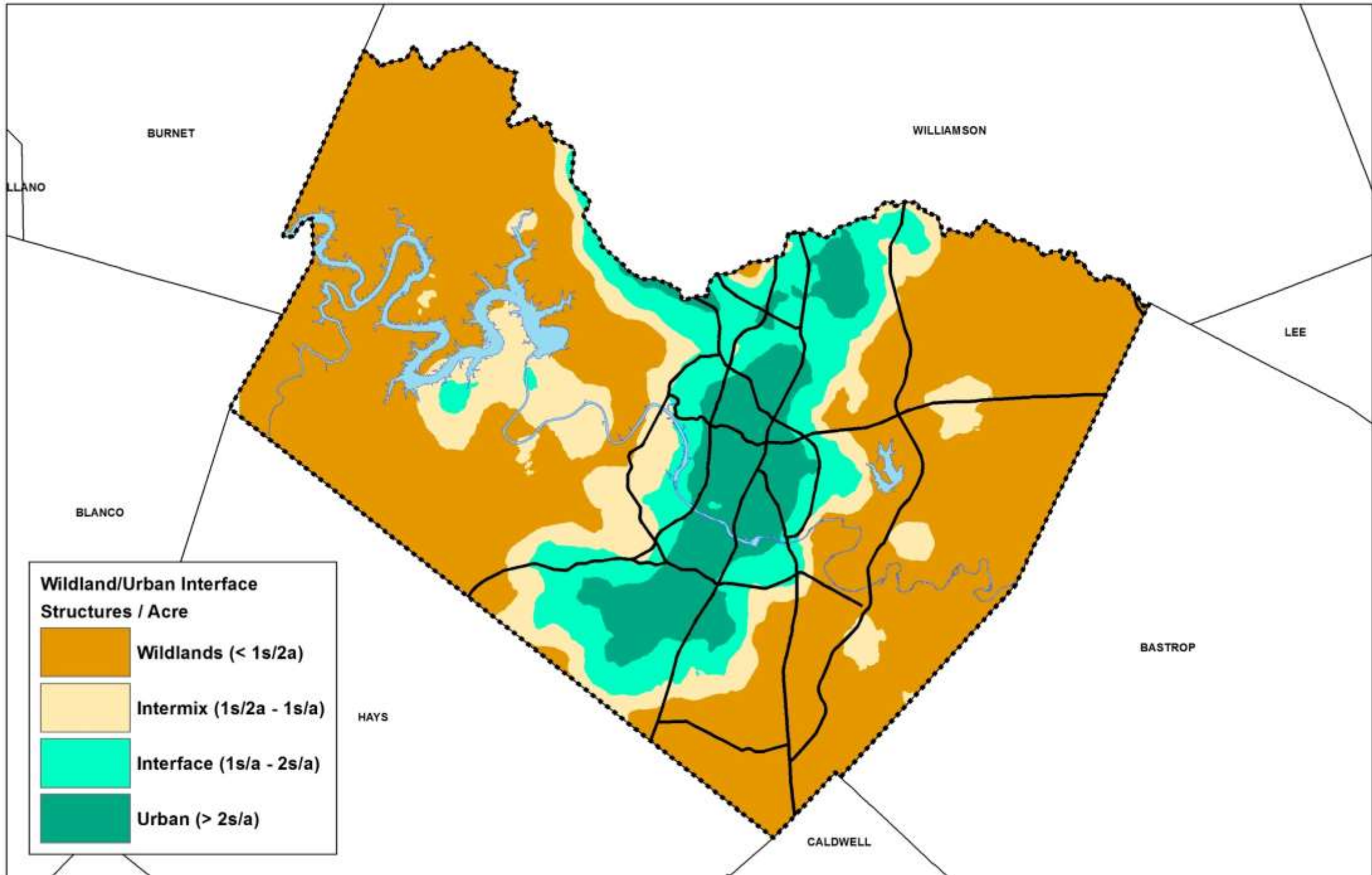


What and Where is the WUI?

David Gimnich
Nate Casebeer

What and Where is the...

- -WUI
- Risk
- Work Done

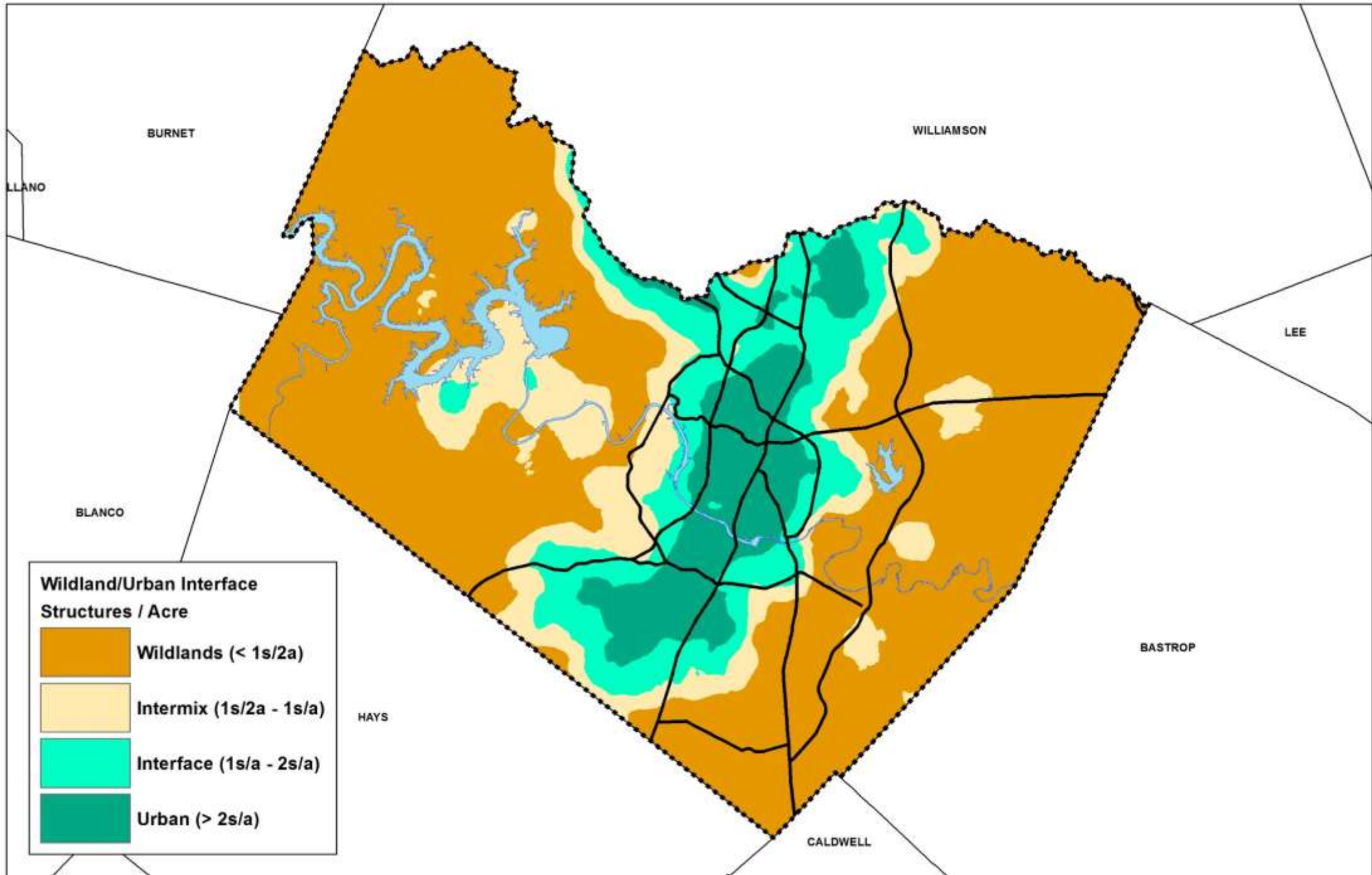










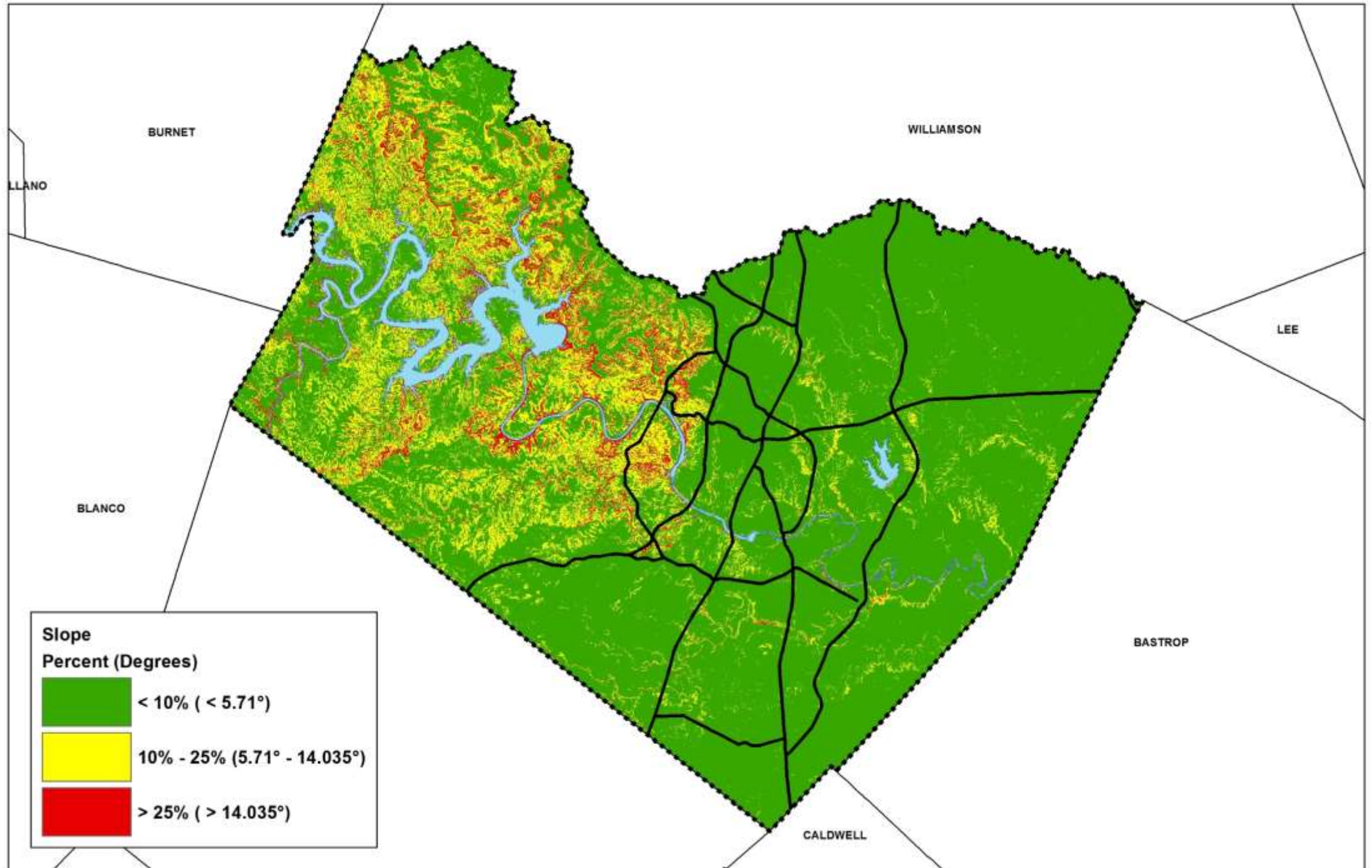


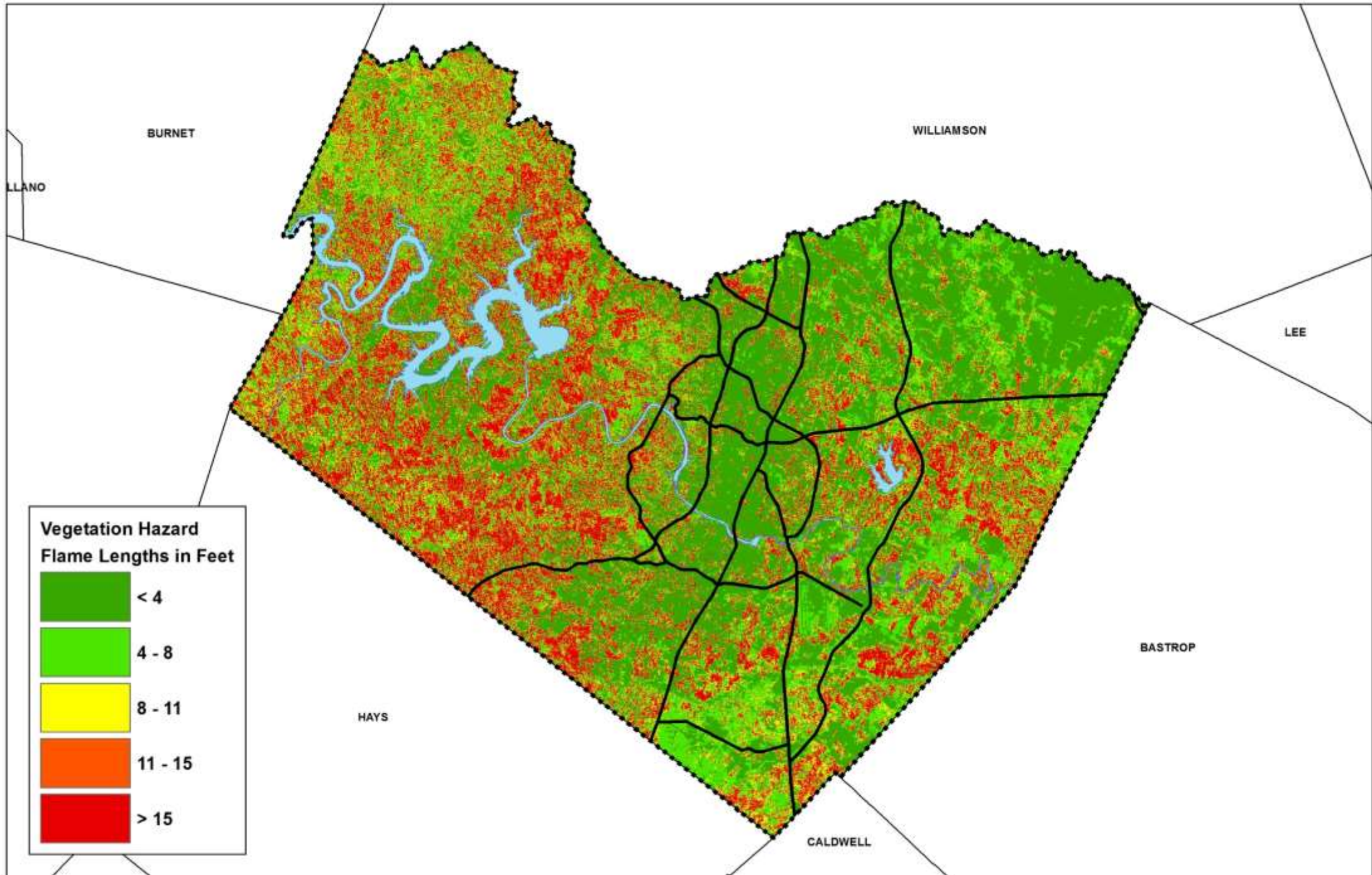
What and Where is the...

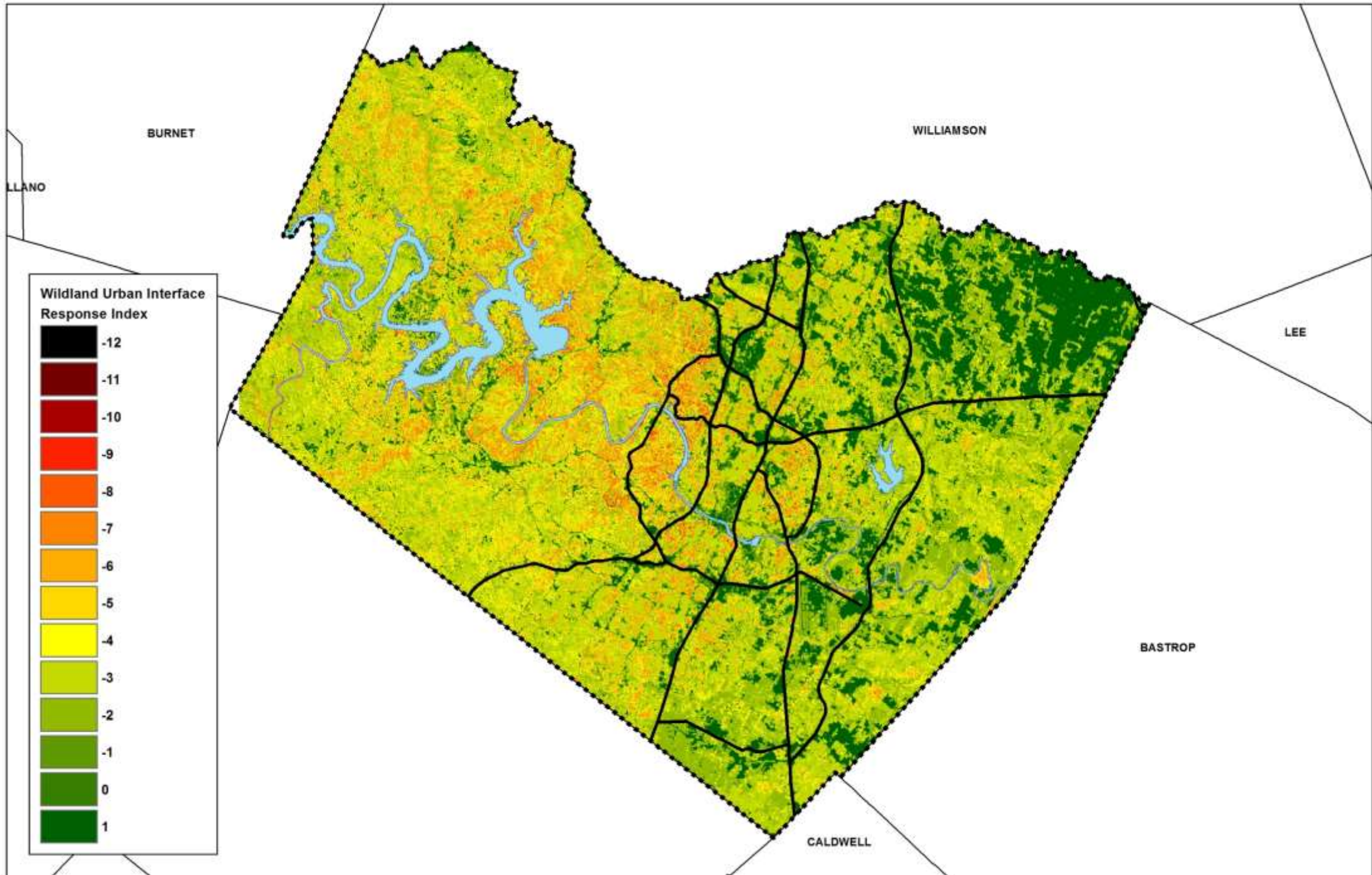
- WUI

-  -Risk

- Work Done











What and Where is the...

- WUI

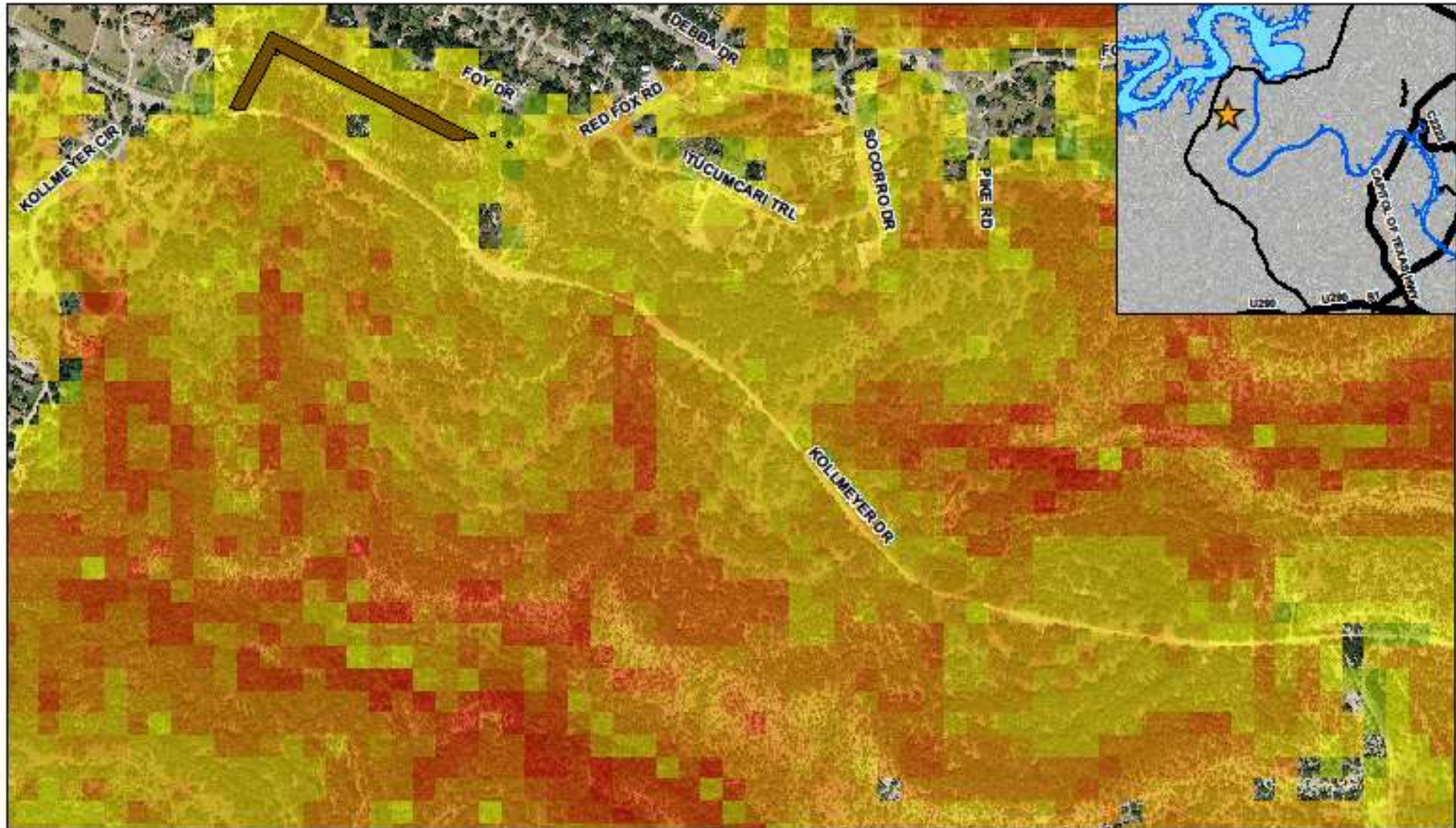
- Risk

-  -Work Done

Treatment Areas

- **Wildland-Urban Interface (WUI)** - Any developed area where conditions affecting the combustibility of both wildland and built fuels allow for the ignition and spread of fire through the combined fuel complex.
- Public Land Boundaries
- FireWise Communities
- Prescribed burns not practical
- A full time fuels crew and firefighters





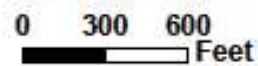
Kollmeyer WUI Response Index Map - SMD 0

 Treatment Area 60 ft X 72.6 ft

Relative Response Value

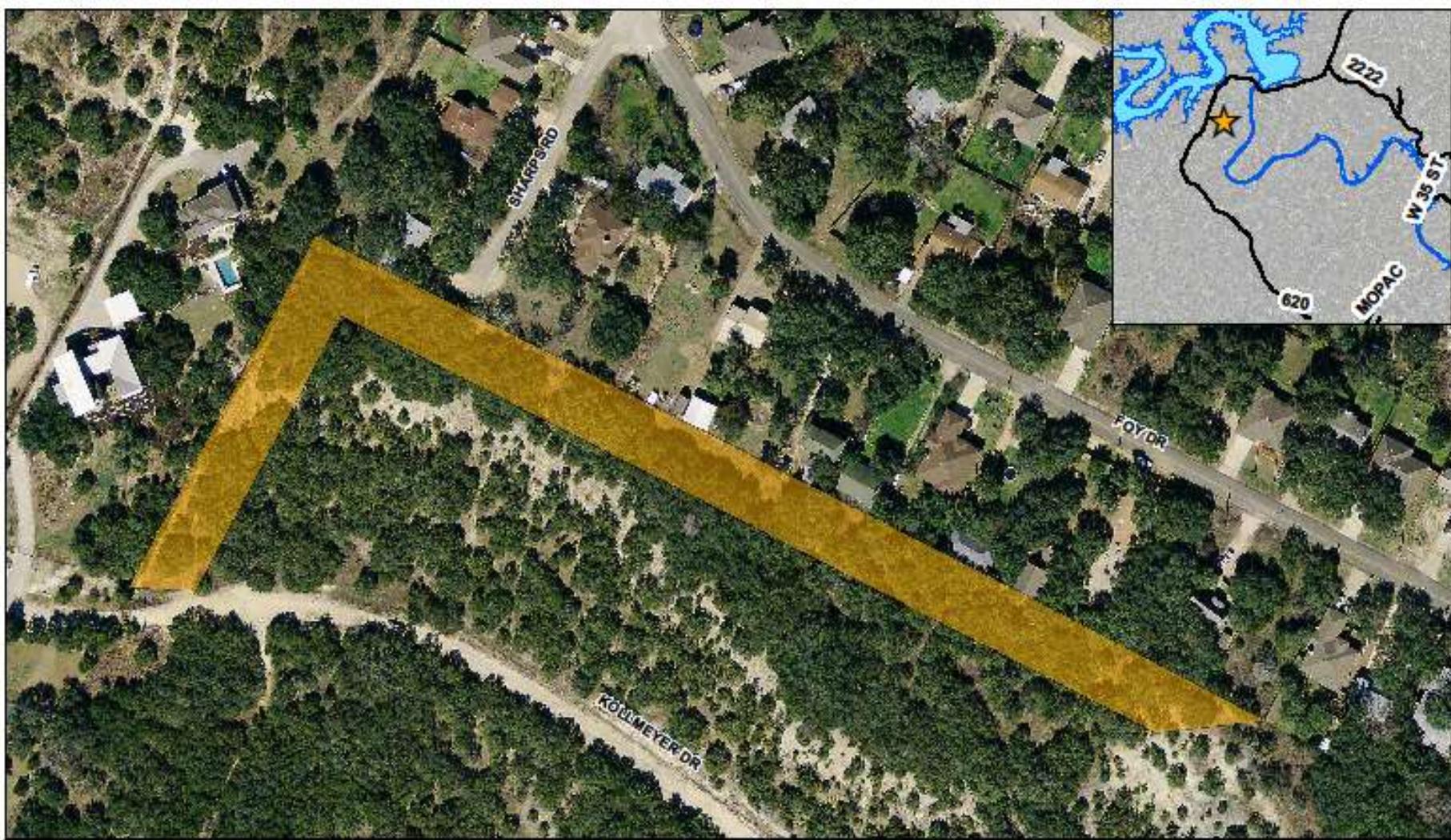


Site 0-3 Updated 12-28-2016



N

The property boundaries and easements are for informational purposes and may not have been prepared for or be suitable for legal, engineering, or surveying purposes. Unless otherwise noted on the drawing they do not represent an on-the-ground survey and represent only the approximate relative location. The boundaries have been produced by the Austin Fire Department Wildfire Division for the sole purpose of geographic reference. No warranty is made by the City of Austin regarding specific accuracy or completeness.



Kollmeyer Site Map - SMD 0

 Shaded Fuel Break 1.8 Acres
60 ft X 72.6 ft

Site 0-3 Updated 12-28-2016



0 50 100
Feet

N

The property boundaries and easements are for informational purposes and may not have been prepared for or be suitable for legal, engineering, or surveying purposes. Unless otherwise noted on the drawing they do not represent an on-the-ground survey and represent only the approximate relative location. The boundaries have been produced by the Austin Fire Department Wildfire Division for the sole purpose of geographic reference. No warranty is made by the City of Austin regarding specific accuracy or completeness.

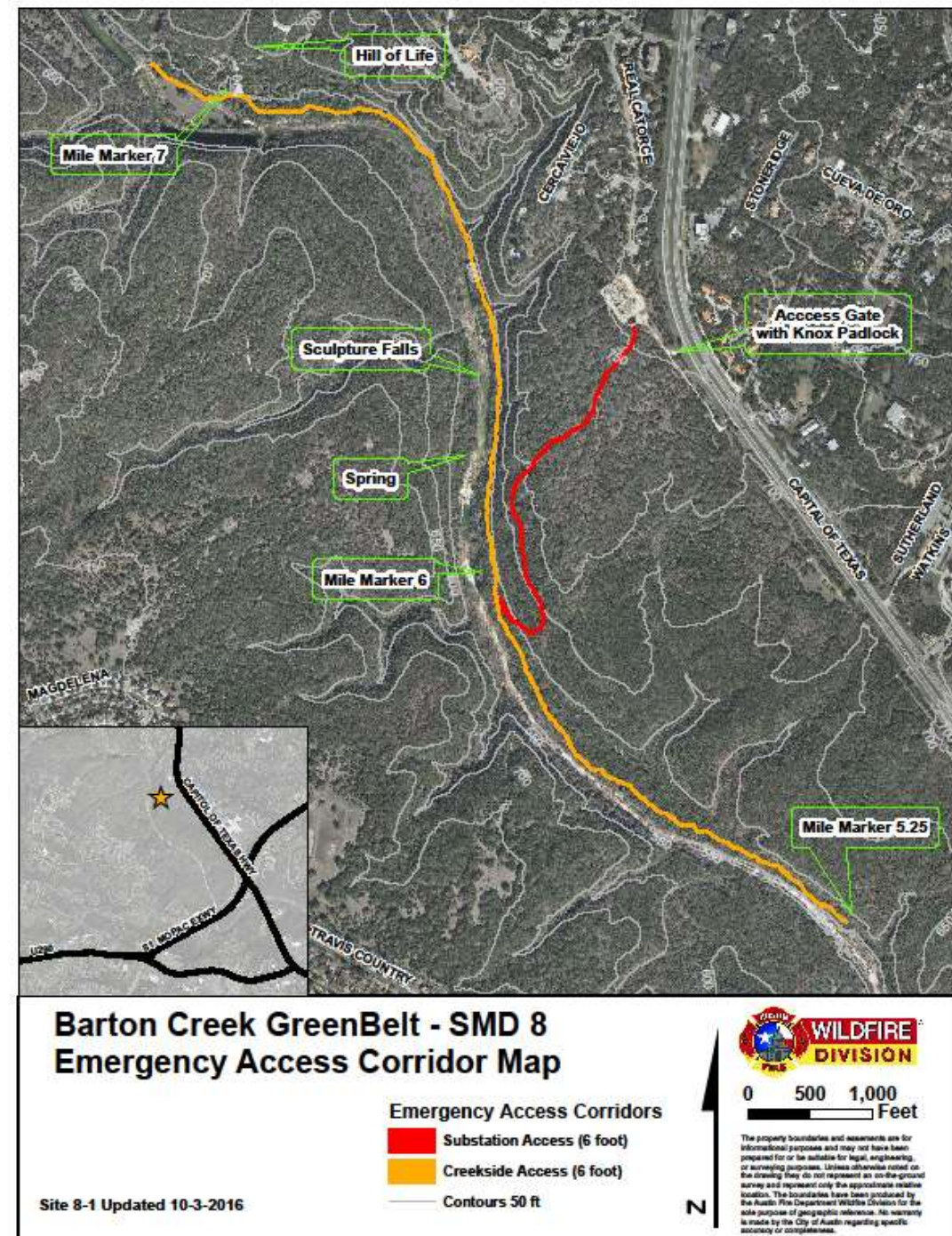
Treatment Targets

- Fuel Loadings of highly flammable fuels
- High Density with “ladder” Fuels
- Invasive Species Management
- Favor valuable species
- 3 Types of common treatments:
 - Access Corridors
 - Dead and Down Removal
 - Shaded Fuel Break



Access Corridors

Provide emergency access for personnel and emergency response apparatus in the event of an emergency



Dead & Down Removal

The removal of dead trees and downed woody debris (usually done as an extension of a shaded fuel break)



Shaded Fuel Break

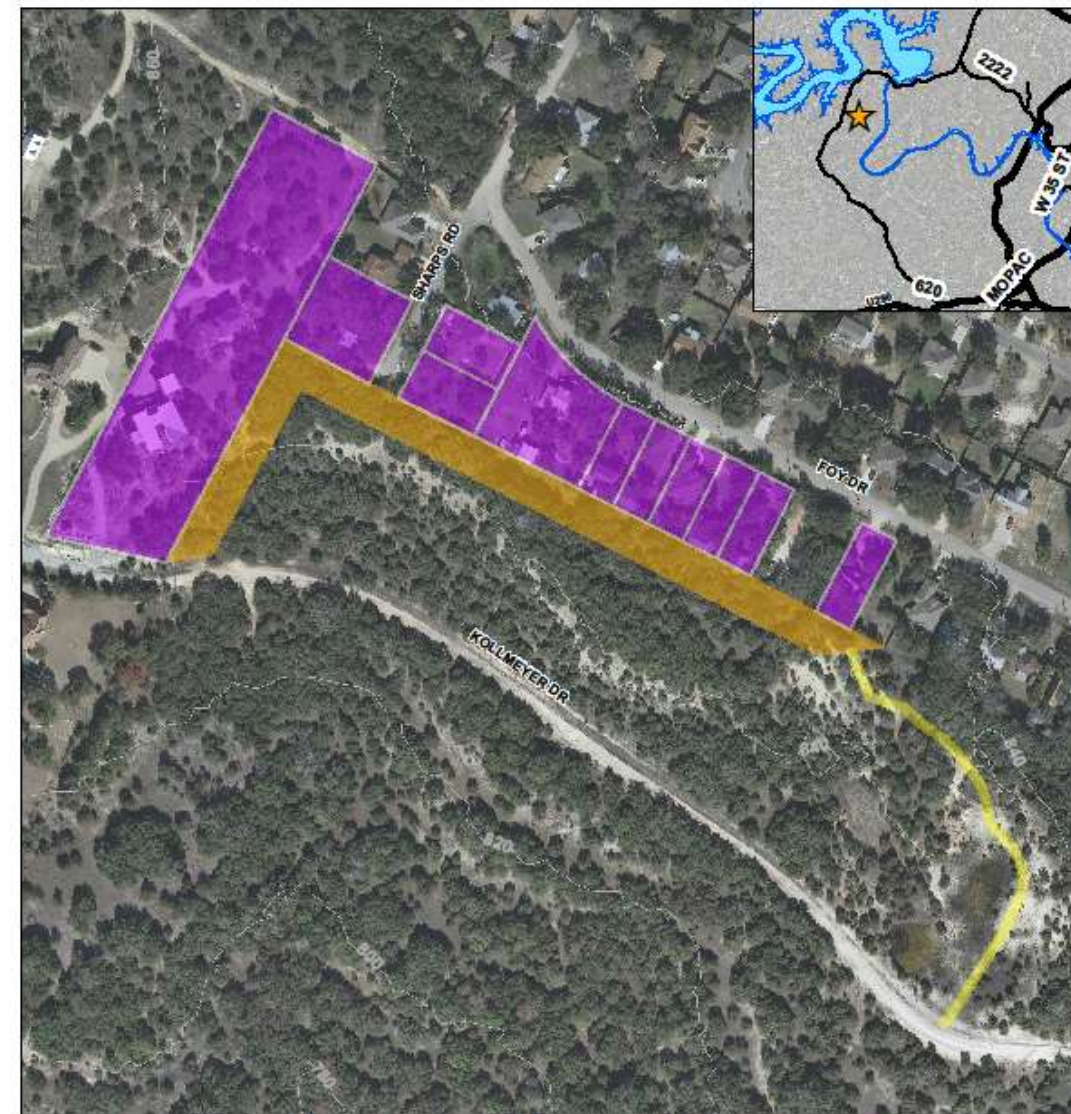
Fine fuels (<3 inches in diameter) are removed where they exist to a height of six to eight feet.



Before



After



Kollmeyer Fuel Reduction Map - SMD 0

Total Home Values:
\$2,550,639

Structures Protected:
10 homes

Site 0-3 Updated 12-1-2016

Access Trail

Home Ignition Zone Corridor

60 ft - Shaded Fuel Break

20 ft - Contours

1,440 ft



0 100 200 Feet

The property boundaries and easements are for informational purposes and may not have been prepared for or be suitable for legal, engineering, or surveying purposes. Unless otherwise noted on the drawing they do not represent an on-the-ground survey and represent only the approximate relative location. The boundaries have been produced by the Austin Fire Department Wildfire Division for the sole purpose of geographic reference. No warranty is made by the City of Austin regarding specific accuracy or completeness.

Shaded Fuel Break

- Reduce the fuel load.
- Raise the canopy base height.
- Reduce fine fuels while preserving the shaded canopy cover.
- Remove all dead and downed vegetation.
- Eradicate any invasive, non-native species found.
- Promote a mixed hardwood/juniper closed canopy (70-100%) woodlands cover-type



Before



After





Kollmeyer BCP Project 1.8 acre SFB

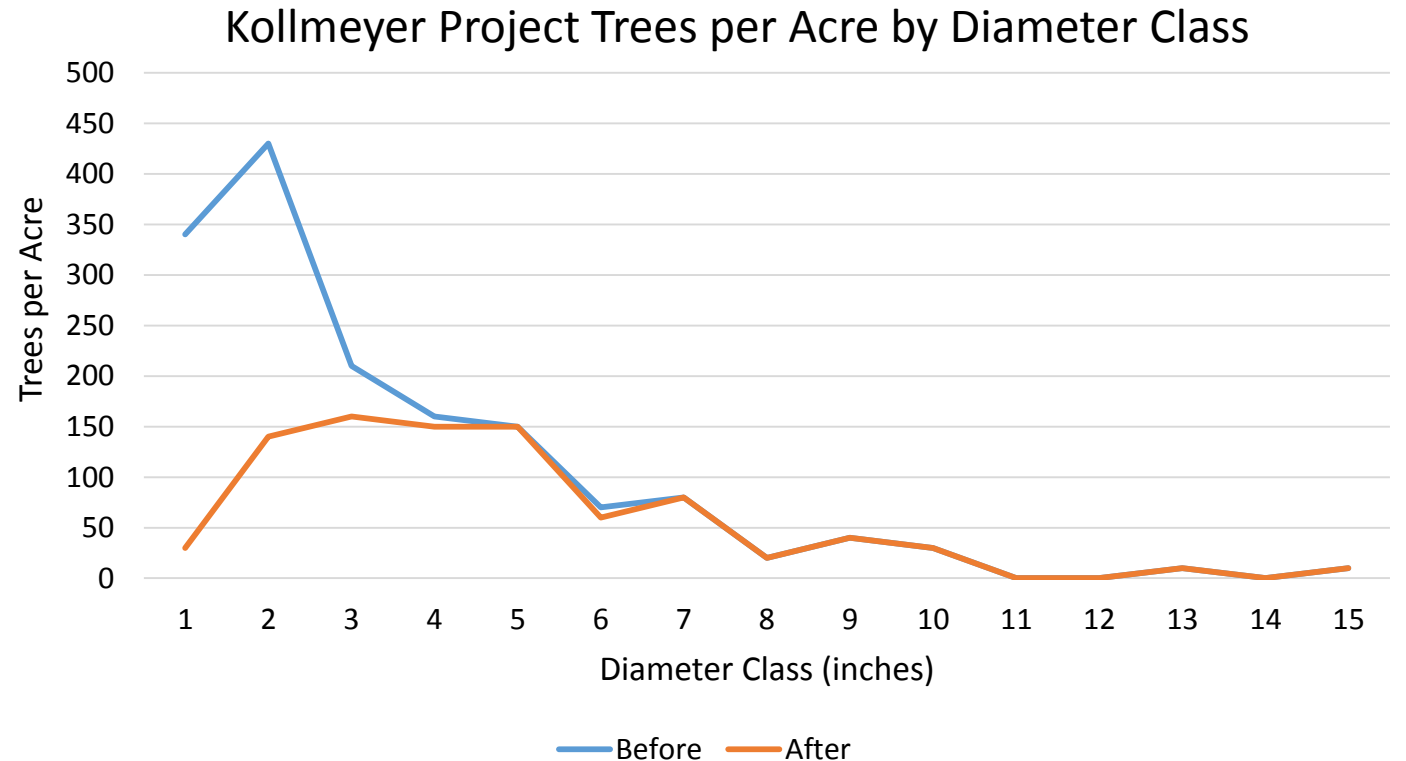
- Average Canopy Coverage

Before: 60% Change: 16%

- Trees Per Acre

Before: 1550 After: 880

- Tons Removed: **16.5**

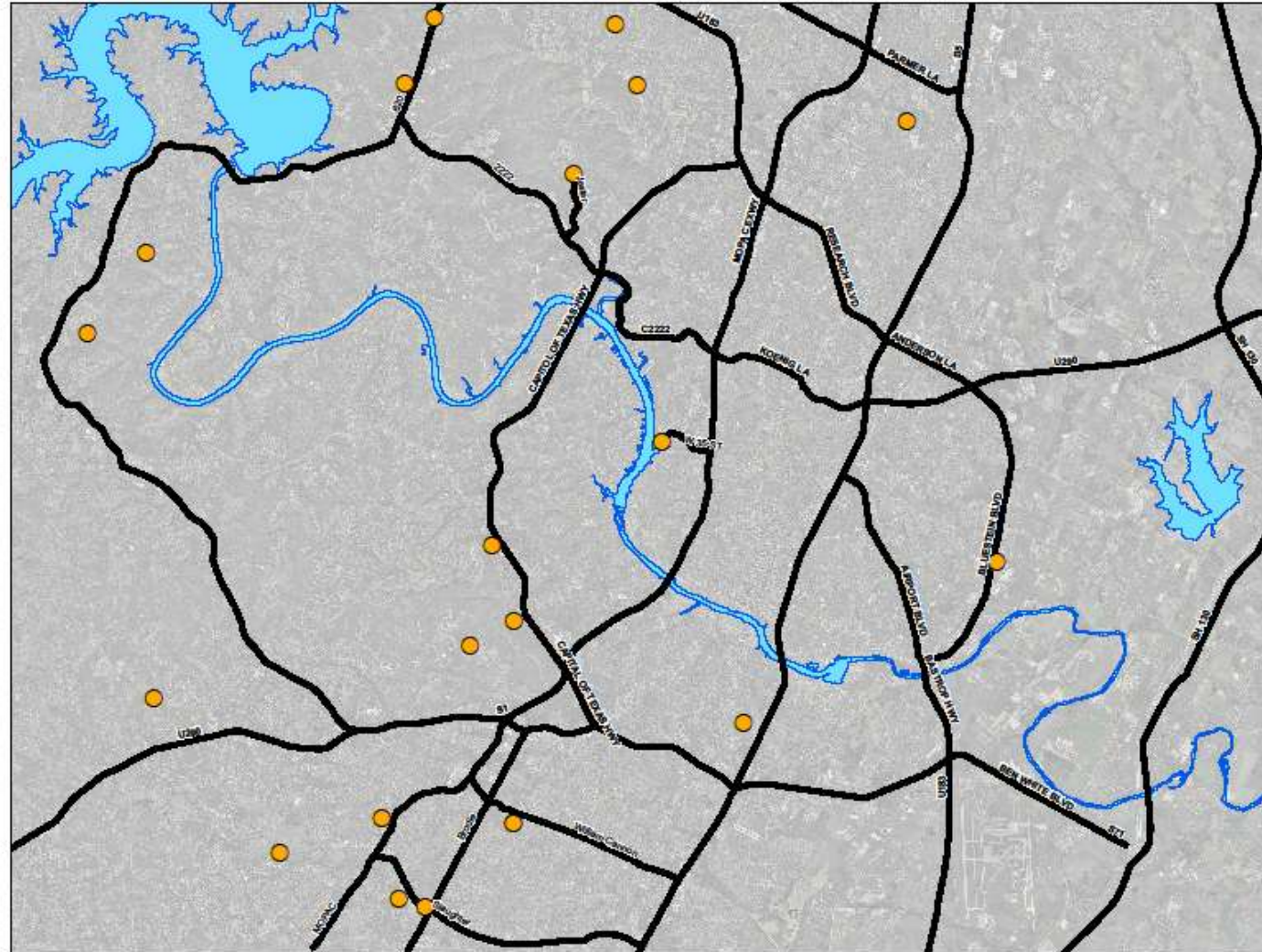






AFD Wildfire Fuels Mitigation Program Results

- 12 completed projects 2016
- 5 completed projects to-date 2017
- 3.4 miles of boundary treated
- 160 Homes Protected
- \$85,489,404 residential property values protected



Thank You

